

# CERVICAL CANCER – Delaware 2010-2014

## Risk factors

- Infection from the human papilloma virus (HPV) – 2/3 of all cervical cancers are caused by HPV 16 and 18
- Obesity or overweight
- Cigarette smoking (doubles the risk)
- Diet low in fruits and vegetables
- Infection with HIV or Chlamydia
- Long term use of oral contraceptives (5 or more years)
- Three or more full term pregnancies; having a full term pregnancy before age 17 doubles the risk compared to a woman who has a first pregnancy at age 25 or later

## Early Detection

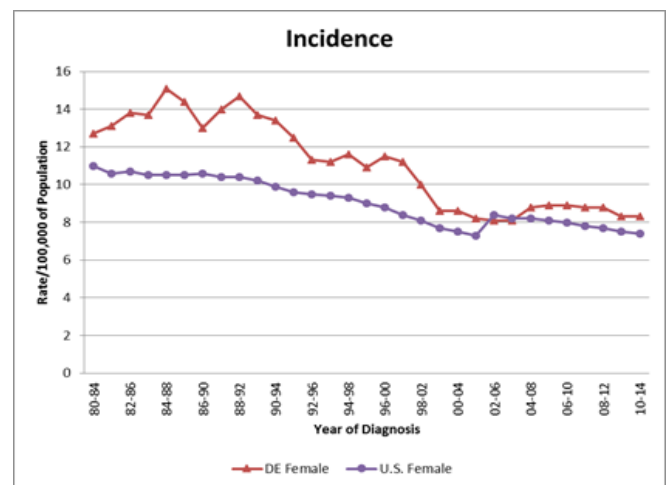
- The American Cancer Society (ACS) recommends that women 21-65 should be screened every 3 years
- Women age 30-65 can also opt for a combination pap smear and HPV testing every 5 years
- Women who have been vaccinated against HPV should continue following the guidelines for their age group

## Delaware Cervical Cancer Facts

- In 2016, 79% of women 21-65 years of age in Delaware had a pap test within the last 3 years (compared to 80% nationally)
- 1% of new cancer cases in women, 2% of all cancer deaths in women
- 70% of new cases are in non-Hispanic Caucasian women, 68% of deaths are in non-Hispanic Caucasian women

	Incidence	Mortality
National Rank	12 <sup>th</sup>	6 <sup>th</sup>
Age Adjusted Rates <sup>^</sup>		
DE	8.3 (7.2, 9.5)	3.0 (2.3, 3.8)
US	7.4 (7.3, 7.5)	2.3 (2.3, 2.3)
DE – NH Caucasian	8.6 (7.2, 10.3)	2.6 (1.9, 3.5)
US – NH Caucasian	6.9 (6.8, 7.1)	2.1 (2.0, 2.1)
DE – NH African American	9.7 (7.2, 12.8)	---
US – NH African American	8.9 (8.6, 9.3)	3.9 (3.8, 4.0)
DE – Hispanic	---	---
US – Hispanic	9.1 (8.8, 9.5)	2.6 (2.5, 2.7)
DE – Male	N/A	N/A
US – Male	N/A	N/A
DE – Female	N/A	N/A
US – Female	N/A	N/A
Stage of Diagnosis		
Local	46%	---
Regional	31%	---
Distant	19%	---
Unknown	4%	---
Age at Diagnosis <sup>*</sup>		
0-39 Years	4.0	---
40-64 Years	14.2	4.4
65-74 Years	16.9	---
75-84 Years	---	---
85 Years and Older	---	---

## Five-Year Age-Adjusted Cervical Cancer Incidence Rates, US and Delaware 1980-2014



## Five-Year Age-Adjusted Cervical Cancer Mortality Rates, US and Delaware 1980-2014



## Data Sources

Delaware (Incidence): Delaware Cancer Registry, Delaware Health and Social Services, Division of Public Health, 2017

Delaware (Mortality): Delaware Health Statistics Center, 2017

US: Surveillance, Epidemiology and End Results Program (SEER 18), National Cancer Institute, 2017

NH – Non-Hispanic

<sup>^</sup>Age-Adjusted Rates/100,000 of Population (rates based on less than 25 cases or deaths are not shown)

<sup>\*</sup>Age-Specific Rates/100,000 of Population (rates based on less than 25 cases or deaths are not shown)