

# COLORECTAL CANCER – Delaware 2010-2014

## Risk factors

- Diet high in red/processed meat
- Obesity
- Long term tobacco use
- Heavy alcohol use
- Type 2 diabetes
- Age 50 or older
- Increased risk in African Americans
- Personal history of colorectal adenomatous polyps
- Previous history of colorectal cancer
- History of Inflammatory Bowel Disease, Ulcerative Colitis or Crohn's Disease

## Early Detection

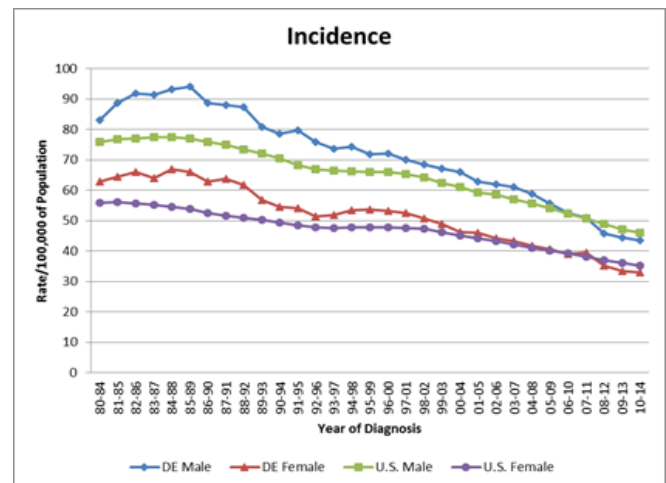
- American Cancer Society (ACS) recommends screening starting at age 50
- In 2014 Delaware ranked 5<sup>th</sup> in the US of adults aged 50 or older who had been screened
- Older Delawareans reported higher screening rates
- The proportion of adults who were screened increased with education

## Delaware Colorectal Cancer Facts

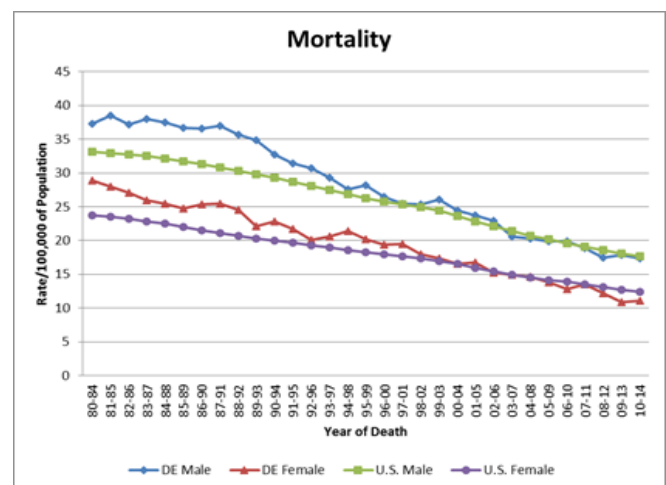
- Third most commonly diagnosed cancer in males and females and third most common cause of cancer death
- 7% of new cancer cases diagnosed, 8% of all cancer deaths
- 52% of new cases are in males, 54% of deaths are in males

	Incidence	Mortality
National Rank	35 <sup>th</sup>	41 <sup>st</sup>
Age Adjusted Rates <sup>^</sup>		
DE	37.8 (36.1, 39.4)	13.9 (12.9, 15.0)
US	40.1 (39.9, 40.2)	14.8 (14.7, 14.8)
DE – NH Caucasian	37.9 (36.0, 39.9)	13.5 (12.4, 14.6)
US – NH Caucasian	40.2 (39.9, 40.4)	14.6 (14.5, 14.6)
DE – NH African American	41.8 (37.5, 46.5)	15.3 (12.6, 18.3)
US – NH African American	49.8 (49.1, 50.5)	20.5 (20.3, 20.7)
DE – Hispanic	29.7 (21.3, 39.9)	---
US – Hispanic	33.9 (33.4, 34.4)	11.7 (11.5, 11.9)
DE – Male	43.6 (41.0, 46.4)	17.4 (15.7, 19.3)
US – Male	46.0 (45.7, 46.3)	17.7 (17.6, 17.8)
DE – Female	33.0 (31.0, 35.2)	11.1 (10.0, 12.4)
US – Female	35.1 (34.9, 35.4)	12.4 (12.3, 12.5)
Stage of Diagnosis		
Local	38%	---
Regional	36%	---
Distant	21%	---
Unknown	5%	---
Age at Diagnosis <sup>*</sup>		
0-39 Years	2.5	---
40-64 Years	43.9	13.1
65-74 Years	132.6	42.6
75-84 Years	214.2	90.4
85 Years and Older	295.6	183.7

## Five-Year Age-Adjusted Colorectal Cancer Incidence Rates, US and Delaware 1980-2014



## Five-Year Age-Adjusted Colorectal Cancer Mortality Rates, US and Delaware 1980-2014



## Data Sources

Delaware (Incidence): Delaware Cancer Registry, Delaware Health and Social Services, Division of Public Health, 2017

Delaware (Mortality): Delaware Health Statistics Center, 2017

US: Surveillance, Epidemiology and End Results Program (SEER 18), National Cancer Institute, 2017

NH – Non-Hispanic

<sup>^</sup>Age-Adjusted Rates/100,000 of Population (rates based on less than 25 cases or deaths are not shown)

<sup>\*</sup>Age-Specific Rates/100,000 of Population (rates based on less than 25 cases or deaths are not shown)