

# LUNG CANCER – Delaware 2010-2014

## Risk factors

- Tobacco use (according to the US Department of Health and Human Services 85%-90% are caused by tobacco use)
- Exposure to secondhand smoke
- Heavy alcohol use
- Diet low in fruits and vegetables/high in cholesterol
- Occupational exposure to asbestos, paint, mustard gas and other chemicals
- Environmental exposure to radon gas, air pollution
- Family history of lung cancer
- Personal history of tuberculosis

## Early Detection

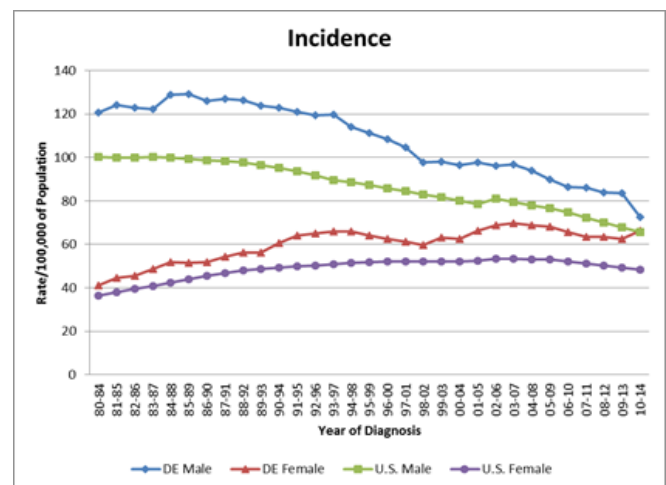
- American Cancer Society (ACS) published new screening guidelines in 2013
- Recommendation that high risk patients get screened (criteria: aged 55-74 in fairly good health, smoking history equivalent to a pack a day for 30 or more years or currently smoke or have quit in the last 15 years)
- Screening is performed using a CT scan

## Delaware Lung Cancer Facts

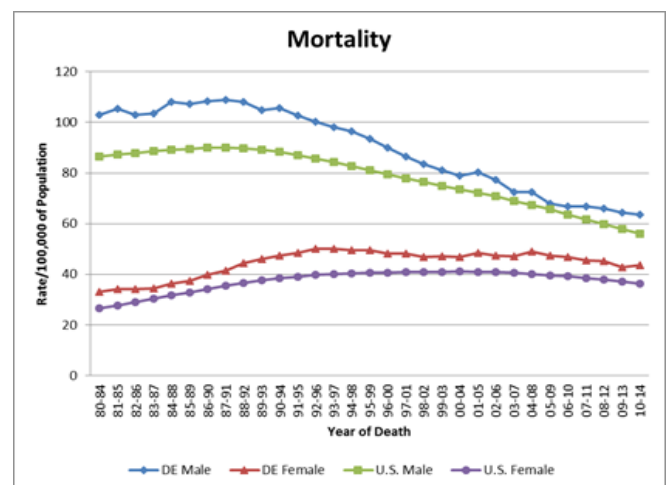
- Most frequently diagnosed cancer
- 14% of new cancer cases diagnosed, 30% of all cancer deaths
- 51% of cases are in males, 54% of deaths are in males
- In 2016, the smoking prevalence among adults in Delaware was 18%

	Incidence	Mortality
National Rank	10 <sup>th</sup>	13 <sup>th</sup>
Age Adjusted Rates <sup>^</sup>		
DE	70.9 (68.7, 73.2)	52.2 (50.2, 54.1)
US	55.8 (55.6, 56.0)	44.7 (44.6, 44.8)
DE – NH Caucasian	73.6 (71.1, 76.2)	53.2 (51.1, 55.4)
US – NH Caucasian	61.8 (61.6, 62.1)	47.9 (47.8, 48.0)
DE – NH African American	67.3 (61.7, 73.3)	46.9 (42.2, 52.0)
US – NH African American	64.5 (63.7, 65.3)	49.3 (48.9, 49.6)
DE – Hispanic	38.1 (28.3, 49.8)	22.6 (15.0, 32.4)
US – Hispanic	28.8 (28.3, 29.3)	19.4 (19.1, 19.6)
DE – Male	81.4 (77.9, 85.1)	63.6 (60.4, 66.9)
US – Male	65.7 (65.3, 66.1)	55.9 (55.7, 56.1)
DE – Female	63.2 (60.4, 66.2)	43.6 (41.3, 46.1)
US – Female	48.4 (48.1, 48.7)	36.3 (36.2, 36.4)
Stage of Diagnosis		
Local	21%	---
Regional	21%	---
Distant	53%	---
Unknown	5%	---
Age at Diagnosis*		
0-39 Years	---	---
40-64 Years	66.1	43.3
65-74 Years	338.1	231.9
75-84 Years	482.4	390.7
85 Years and Older	403.7	385.5

## Five-Year Age-Adjusted Lung Cancer Incidence Rates, US and Delaware 1980-2014



## Five-Year Age-Adjusted Lung Cancer Mortality Rates, US and Delaware 1980-2014



## Data Sources

Delaware (Incidence): Delaware Cancer Registry, Delaware Health and Social Services, Division of Public Health, 2017

Delaware (Mortality): Delaware Health Statistics Center, 2017

US: Surveillance, Epidemiology and End Results Program (SEER 18), National Cancer Institute, 2017

NH – Non-Hispanic

<sup>^</sup>Age-Adjusted Rates/100,000 of Population (rates based on less than 25 cases or deaths are not shown)

\*Age-Specific Rates/100,000 of Population (rates based on less than 25 cases or deaths are not shown)